



9210 - 9220 - 9250

-20°C ÷ +150°C

9210PRO - 9220PRO

-20°C ÷ +80°C



1610

-5°C ÷ +70°C

9120F

0°C ÷ +60°C

9611

-10°C ÷ +110°C



PN (Nominal Pressure)

See the table

Compressed air and  
non-aggressive gases- Taper gas BSPT ISO 7  
- Parallel gas BSPP ISO 228-1

9210 - 9220 - 9250

Body: Nickel plated brass

Body end: Nickel plated brass

Seat: PTFE

Ball: Chrome plated brass

Stem: Nickel plated brass

O'Ring: NBR

Seal: PTFE



Packing nut: Nickel plated brass

Handle: Steel

Nut: Steel

1610

Body: Chrome plated brass

Slide: Blue anodized aluminum

O'Ring: NBR 70

Elastic ring: Steel

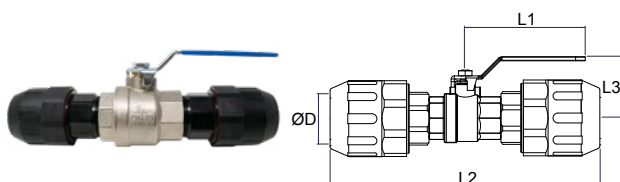
1110

Body: Nickel plated brass

Products in compliance with  
the directive 1907/2006Products in compliance with  
the directive EU 2015/863

## 9210PRO

### Full bore ball valve - blue lever

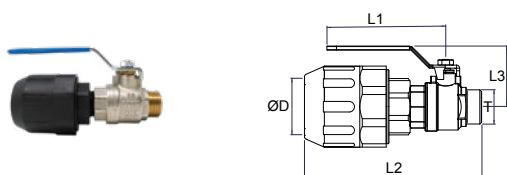


CODE	ØD	DN	PN	L1	L2	L3	WEIGHT (g)
9210PRO25	25	21	16	92	216	59	704
9210PRO40	40	36	16	150	290	75	1583

For fittings construction details &amp; datasheet, please refer to page 20.

## 9220PRO

### Full bore ball valve - blue lever



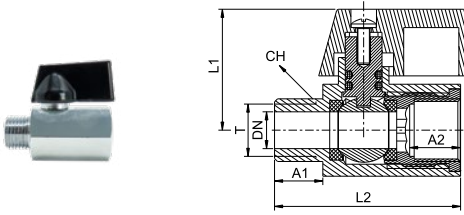
CODE	ØD	T	DN	PN	L1	L2	L3	WEIGHT (g)
9220PRO20G04	20	G 1/2"	14	16	92	102,5	43	217
9220PRO25G04	25	G 1/2"	14	16	92	108,5	43	246
9220PRO25G05	25	G 3/4"	18	16	92	121	47	319
9220PRO25G06	25	G 1"	21	16	115	143	59	554
9220PRO40G08	40	G 1-1/2"	36	16	150	191	75	1242

For fittings construction details &amp; datasheet, please refer to page 20.



### 9120-F

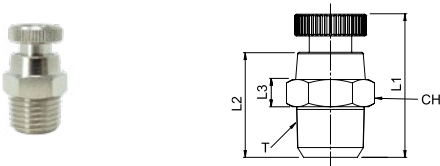
### Brass miniball valve M/F, BSPP Thread



CODE	T	PN	DN	A1	A2	L1	L2	CH	WEIGHT (g)
9120TR14-F	G 1/4"	16	8	10	10	26	40,5	20	74

### 9611

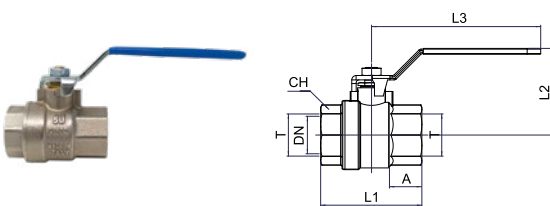
### Brass ball drain valve, BSPT thread



CODE	T	PN	L1	L2	L3	CH	WEIGHT (g)
9611TR14	R 1/4"	16	24	16	5	14	20

### 9210

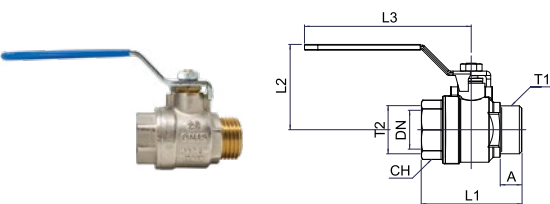
### Full bore ball valve, threaded ends BSPP F/F - blue lever



CODE	T	DN	PN	A	L1	L2	L3	CH	WEIGHT (g)
9210TR12	G 1/2"	15	50	11	50	43	92	25	158
9210TR34	G 3/4"	20	50	13	57	47	92	31	255
9210TR1	G 1"	25	40	15	70	59	115	38	422
9210TR112	G 1-1/2"	40	32	18	90	75	150	54	959

### 9220

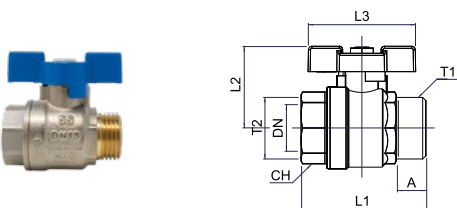
### Full bore ball valve, threaded ends BSPP M/F - blue lever



CODE	T1	T2	DN	PN	L1	L2	L3	CH	WEIGHT (g)
9220TR12	G 1/2"	G 1/2"	15	50	92	50	43	25	174
9220TR34	G 3/4"	G 3/4"	20	50	92	58	47	31	245
9220TR1	G 1"	G 1"	25	40	115	70	59	38	413
9220TR112	G 1-1/2"	G 1-1/2"	40	32	150	91	75	54	930

### 9250

### Full bore ball valve, threaded ends BSPP M/F - blue butterfly lever

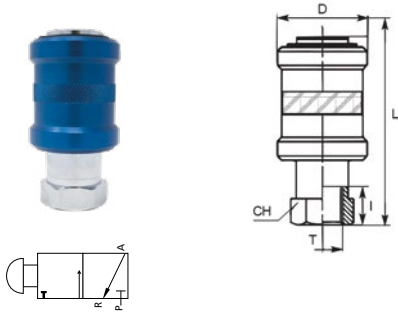


CODE	T1	T2	DN	PN	L1	L2	L3	CH	WEIGHT (g)
9250TR12	G 1/2"	G 1/2"	15	50	50	50	37	25	153
9250TR34	G 3/4"	G 3/4"	20	50	50	58	40	31	224
9250TR1	G 1"	G 1"	25	40	61	70	47	38	364



## 1610

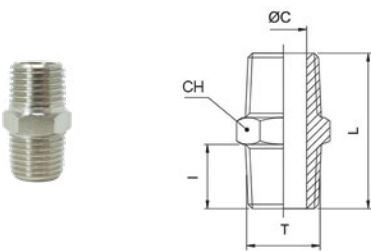
## Slide valve BSPP thread



CODE	T	PN	D	L	I	CH	FLOW (Nl/min)	WEIGHT (g)
1610TR12	G 1/2"	10	40	75	15	27	3800	212
1610TR34	G 3/4"	10	50	83	16,5	32	5700	317

## 1110

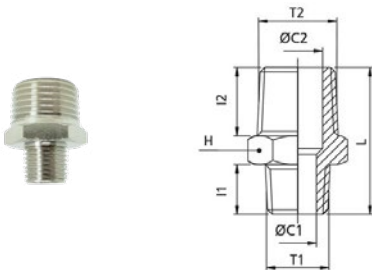
## Nipple BSPT thread



CODE	T	ØC	L	I	H	WEIGHT (g)
1110TR12	R 1/2"	15	30,5	12,5	22	79
1110TR34	R 3/4"	20	34,5	14	27	61

## 1112

## Reduced nipple BSPT thread



CODE	T1	T2	ØC1	ØC2	L	I1	I2	H	WEIGHT (g)
1112TR1234	R 1/2"	R 3/4"	15	20	32,5	12,5	14	27	58

