



-20°C ÷ +80°C



Max. Working Pressure:

16 Bar

Negative Pressure:

-0,95 Bar (-99 Kpa)



Compressed air,  
non-aggressive gases and  
vacuum



Taper gas BSPT ISO 7  
Parallel gas BSPP ISO 228

Body: Reinforced PA  
Aluminum (CA Version)

Tube Seal: NBR

Back Ring: HP technopolymer

Lock Claw: Stainless steel AISI 301

Lock Claw Support: HP technopolymer

Nut Seal: NBR

Nut: Reinforced PA

Screwing Indicator: Silicon

Tube Stop: HP technopolymer  
(CA Version)

## PED

SILICONE FREE



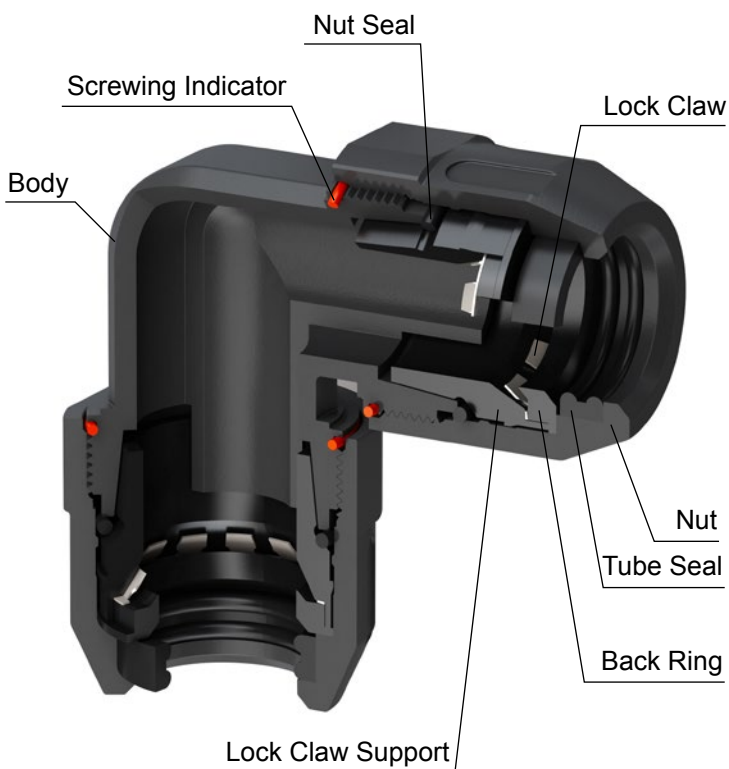
Products in compliance with  
the directive 1907/2006

RoHS3

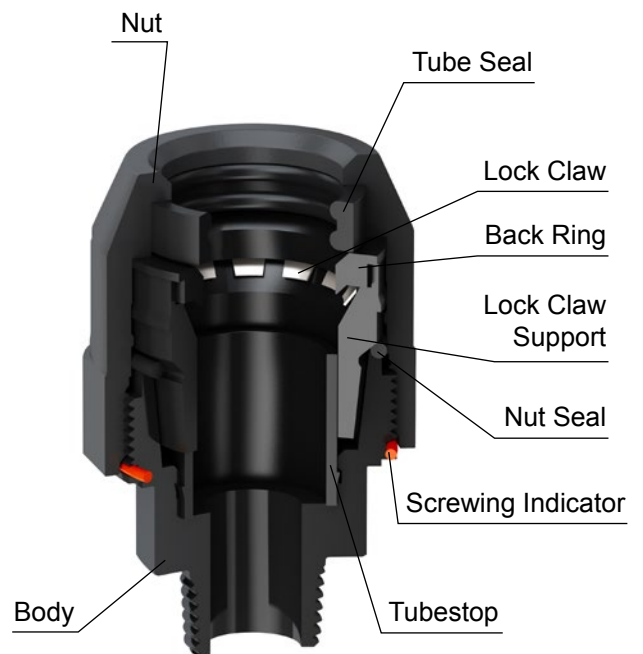
Products in compliance with  
the directive EU 2015/863

## CONSTRUCTION DETAILS

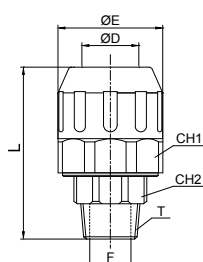
### Standard Version



### CA Version

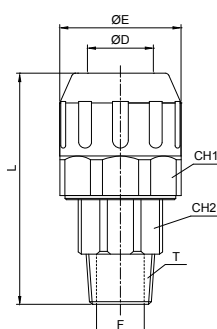


**FPC** Male BSPT thread connector



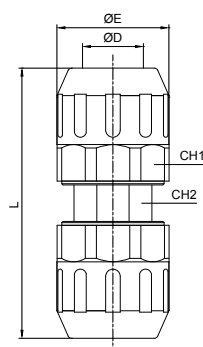
CODE	ØD	T	L	ØF	ØE	CH1	CH2	WEIGHT (g)
FPC20R04	20	R 1/2"	64	14	40,5	39	26	44,5
FPC25R04	25	R 1/2"	70,5	14	48	46	32	72
FPC25R05	25	R 3/4"	75,5	18	48	46	32	74
FPC40R06	40	R 1"	113,2	21	70	67	36	201

**FPCA** Male BSPT thread connector - aluminum body



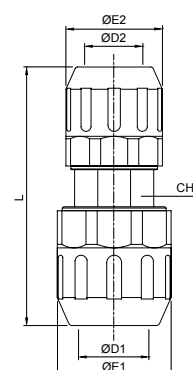
CODE	ØD	T	L	ØF	ØE	CH1	CH2	WEIGHT (g)
FPCA25R06	25	R 1"	88	21	48	46	36	141
FPCA40R08	40	R 1" 1/2"	116,1	36	70	67	50	312

**FPUC** Union connector



CODE	ØD	L	ØE	CH1	CH2	WEIGHT (g)
FPUC20	20	95	40,5	39	26	81,5
FPUC25	25	111	48	46	32	132
FPUC40	40	171,4	70	67	46	388

**FPG** Reduced union connector

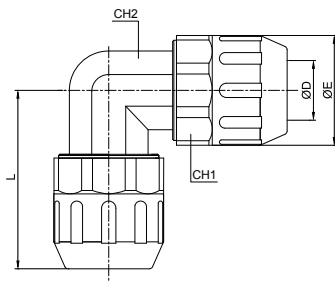


CODE	ØD1	ØD2	ØE1	ØE2	L	CH	WEIGHT (g)
FPG2520	25	20	67	46	136,2	26	103,5
FPG4025	40	25	46	39	101,5	32	240



## FPUL

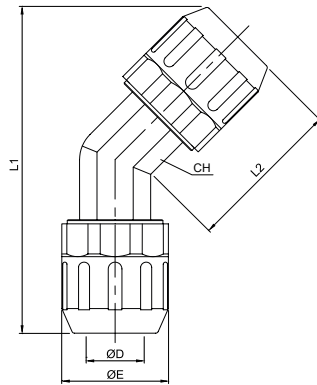
## Union elbow



CODE	ØD	ØE	L	CH1	CH2	WEIGHT (g)
FPUL20	20	40,5	63,5	39	26	92,5
FPUL25	25	48	74,8	46	32	152
FPUL40	40	70	110,2	67	46	409

## FPULH

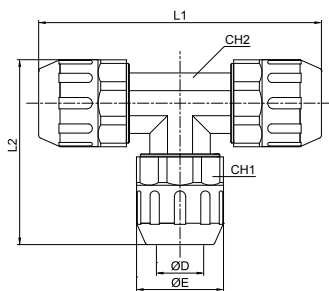
## Union elbow 135°



CODE	ØD	ØE	L1	L2	CH	WEIGHT (g)
FPULH20	20	39	111	53,5	26	89
FPULH25	25	46	131	63	32	140,5
FPULH40	40	67	201	98,2	46	387

## FPUT

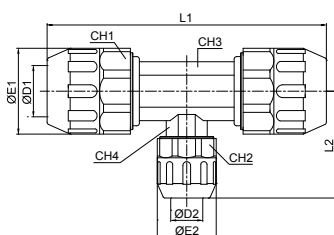
## Union tee



CODE	ØD	L1	L2	ØE	CH1	CH2	WEIGHT (g)
FPUT20	20	127	-	40,5	39	26	135
FPUT25	25	149,6	74,8	48	46	32	221
FPUT40	40	220,4	110,2	70	67	46	619

## FPGT

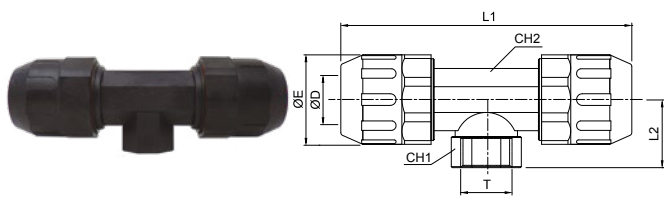
## Reduced union tee



CODE	ØD1	ØD2	L1	L2	ØE1	ØE2	CH1	CH2	CH3	CH4	WEIGHT (g)
FPGT4025	40	25	220,4	83,4	70	48	67	46	46	32	479

**FPGT-G**

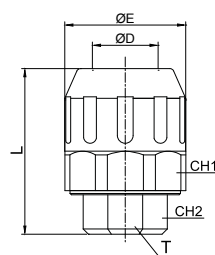
Female tee



CODE	ØD	T	ØE	L1	L2	CH1	CH2	WEIGHT (g)
FPGT25G05	25	G 3/4"	46	149,6	37	36	32	161,5
FPGT40G06	40	G 1"	67	220,4	44	43	46	420

**FPPF**

End plug

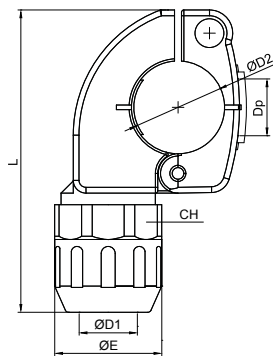


CODE	ØD	T *	L	ØE	CH1	CH2	WEIGHT (g)
FPPF20	20	G 1/4"	56,5	40,5	39	24	46
FPPF25	25	G 1/4"	63	48	46	24	72
FPPF40	40	G 1/4"	88,2	70	67	24	187

\* Blind thread

**FPBR**

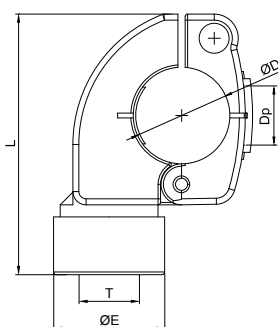
Quick branch



CODE	ØD1	ØD2	L	Dp	ØE	CH	WEIGHT (g)
FPBR2520	20	25					241
FPBR4020	30	40					278
FPBR4025	25	40	129,5	24,5	46	67	290

**FPBR-G**

Quick branch female BSPP aluminum thread

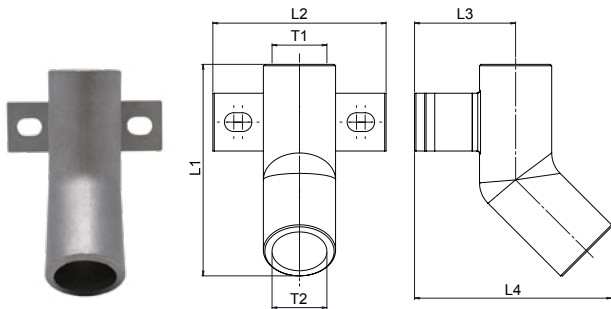


CODE	ØD	T	L	Dp	ØE	WEIGHT (g)
FPBR25G04	25	G 1/2"	90	18,6	34	232,5
FPBR40G05	40	G 3/4"	100	24,5	40,5	287



**FPSAS**

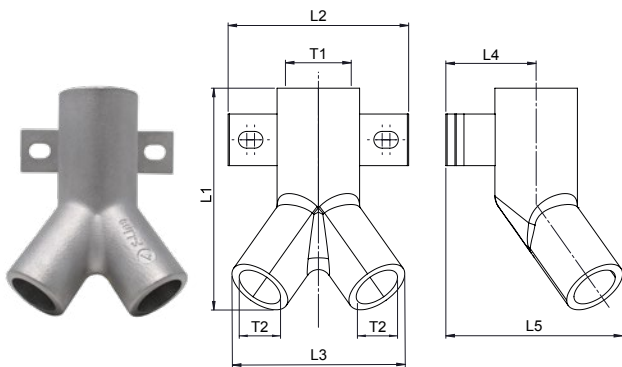
Single applique - Inox AISI 316L



CODE	T1	T2	L1	L2	L3	L4	WEIGHT (g)
FPSAS-G04G04	G 1/2"	G 1/2"	73,5	60,0	35,0	68,5	159

**FPDAS**

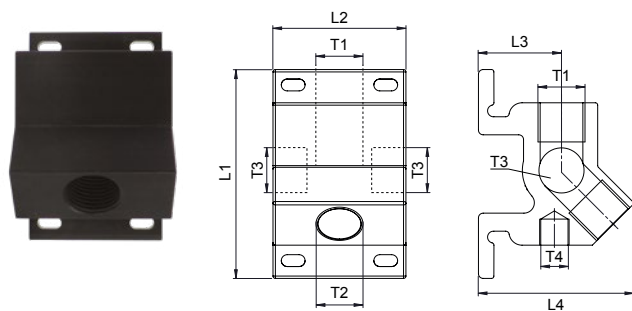
Double applique - Inox AISI 316L



CODE	T1	T2	L1	L2	L3	L4	L5	WEIGHT (g)
FPDAS-G05G04	G 3/4"	G 1/2"	86,0	70,0	67,0	35,0	68,5	265

**FPWLM1**

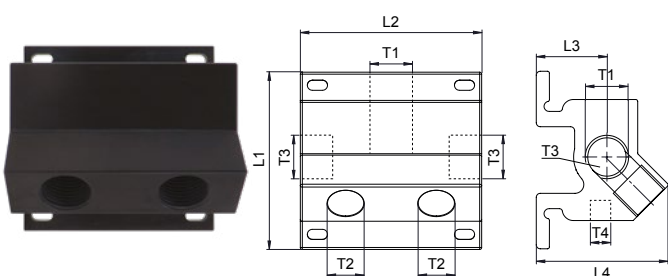
Single applique - Aluminum



CODE	T1 IN	T2 OUT	T3	T4	L1	L2	L3	L4	WEIGHT (g)
FPWLM1-G04G04	G 1/2"	1xG 1/2"	G 1/2"	G 1/4"	88,0	56,0	35,0	66,0	325

**FPWLM2**

Double applique - Aluminum



CODE	T1 IN	T2 OUT	T3	T4	L1	L2	L3	L4	WEIGHT (g)
FPWLM2-G04G04	G 1/2"	2xG 1/2"	G 1/2"	G 1/4"	88,0	90,0	35,0	65,7	530
FPWLM2-G05G04	G 3/4"	2xG 1/2"	G 1/2"	G 1/4"	88,0	90,0	35,0	65,7	515

