

## ASSEMBLY INSTRUCTION

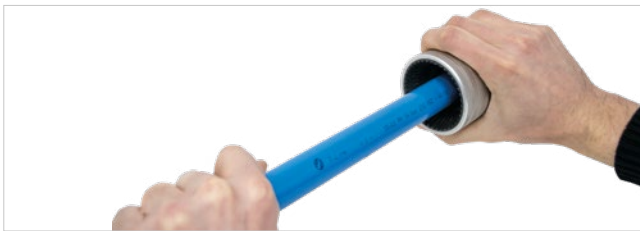
Mod I82 - rev. 0 29/03/2019

The F-Line.PRO system has been designed for quick, safe and easy installation. However qualified personal must take care of the installation by following the indications supplied in order to avoid failures in safety, reliability and performances.

We recommend that horizontal pipelines have to follow a light slope in order to grant condensation collection in a draining point.



Before assembling, prepare the tube cutting it, when needed, using the proper tube cutter FPTT.



Always deburr the tubes and brake sharp edges before connecting them with F-Line.PRO fittings using FPUS beveling cone.



Mark the tube using the back part of the proper spanner in order to identify the correct and full insertion of the tube after installation.



Unscrew the nut of the fitting up to when the red screwing indicator is fully visible.



Fully and carefully insert the tube into the fitting up to the marking previously done.



Tighten the nut carefully up to when the red screwing indicator disappear.

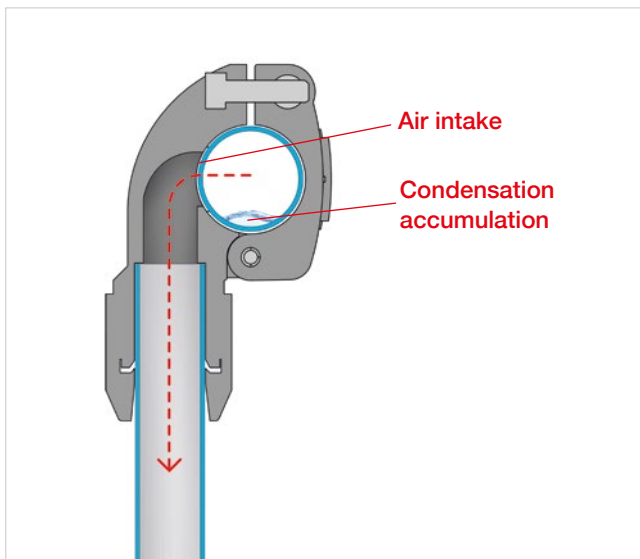


We recommend a function test to be done in safety condition before to start the whole pneumatic system.



## ASSEMBLY INSTRUCTION - QUICK BRANCH

Mod 182 - rev. 0 29/03/2019



F-Line.PRO quick branches allow to get a quick branch from the main conduit without cutting the pipeline and without having the need to prepare the pipes in advance. Moreover, the air intake is positioned above the level at which the condensation accumulation could be inside the tube in order to grant an excellent air quality.



Position the quick branch at the opposite of its final installation position. Use the marker on the body in order to center it correctly on the tube.



Drill the tube with the proper tool FPTD.



Remove the quick branch and clean the hole so that no burrs will remain on the edges or on the tube surface.



Fix the branch so that the internal part will stay correctly in the hole. F.Line-PRO branches have a guided air intake that go inside the tube so that, once fixed, it will be impossible for them to move from their position. This system ensure the functioning, always granting the maximum air flow and eliminating the risk of leakage.

